

WELCOME TO SOUTH PORT

- If you are a visitor to South Port, always stay with your port contact
- For access to operational areas, report directly to the Supervisor's Office. Sign in and complete the relevant induction
- Photo ID must be carried at all times
- Wear the appropriate and required Personal Protective Equipment (PPE). The minimum requirement is high-viz and safety footwear in operational areas
- A hard hat is required in areas where overhead hazards exist
- Safety Glasses are recommended on windy days and in dusty locations



GENERAL SITE RULES

- Maximum speeds are 15km/h, 20km/h, or 30km/h as signposted
- Maximum speed on berths is 15 KMH
- All permanent and temporary signage must be obeyed
- Always give way to the train
- Authorised personnel only permitted to be in the vicinity of a working vessel and into operational areas
- Headlights or flashing roof lights must be used at all times
- Always wear your seat belt
- Park in designated car parks only
- Cell phone usage is not permitted while driving unless it is hands-free
- Only authorised personnel are permitted to drive or operate any vehicle or machinery on site
- Report any uncontrolled hazards/risks and near misses
- Be careful in extreme weather conditions, including high winds
- Do not enter restricted areas without authorisation



THREE-STRIKES POLICY

South Port has a three-strikes policy for any traffic infringement on the Port; obey the signs.



MEDICAL AND FIRST AID

All incidents and injuries must be reported immediately. Defibrillators are located around the site, refer to the site map for their locations.

SOUTH PORT CRITICAL RISKS AND KEY CONTROLS



MOBILE PLANT vs PERSON:

- Be aware of mobile plant on site eg, top lifters, reach stackers, trucks, forklifts and the train, stay clear of working machines
- Keep out of crush zones
- Pedestrians, stick to designated walkways



WORKING AT HEIGHTS:

- Use correct working at heights equipment
- Heights permit must be completed
- Working at heights training completed



FALLING OBJECTS:

- Stay clear of overhead loads
- Ensure stacked product is secure
- Lifting plan must be completed before lifting operations



WORKING ON OR NEAR WATER:

- Wear a personal flotation device when working on or near water
- Identify where lifebuoys and ladders are located
- Diving Permit must be completed prior to diving operations



UNCONTROLLED ENERGY RELEASE:

- Stay clear from shipping snap back zones
- Follow the lockout tagout system
- Do not operate machines without safety guarding



HAZARDOUS SUBSTANCES:

- Wear correct PPE when working with hazardous substances
- Read and follow the Safety Data Sheets prior to use
- Store chemicals in safe, secure locations

CAMERA SURVEILLANCE

South Port is under 24/7 video camera surveillance, footage will be reviewed if an accident or incident occurs on site.

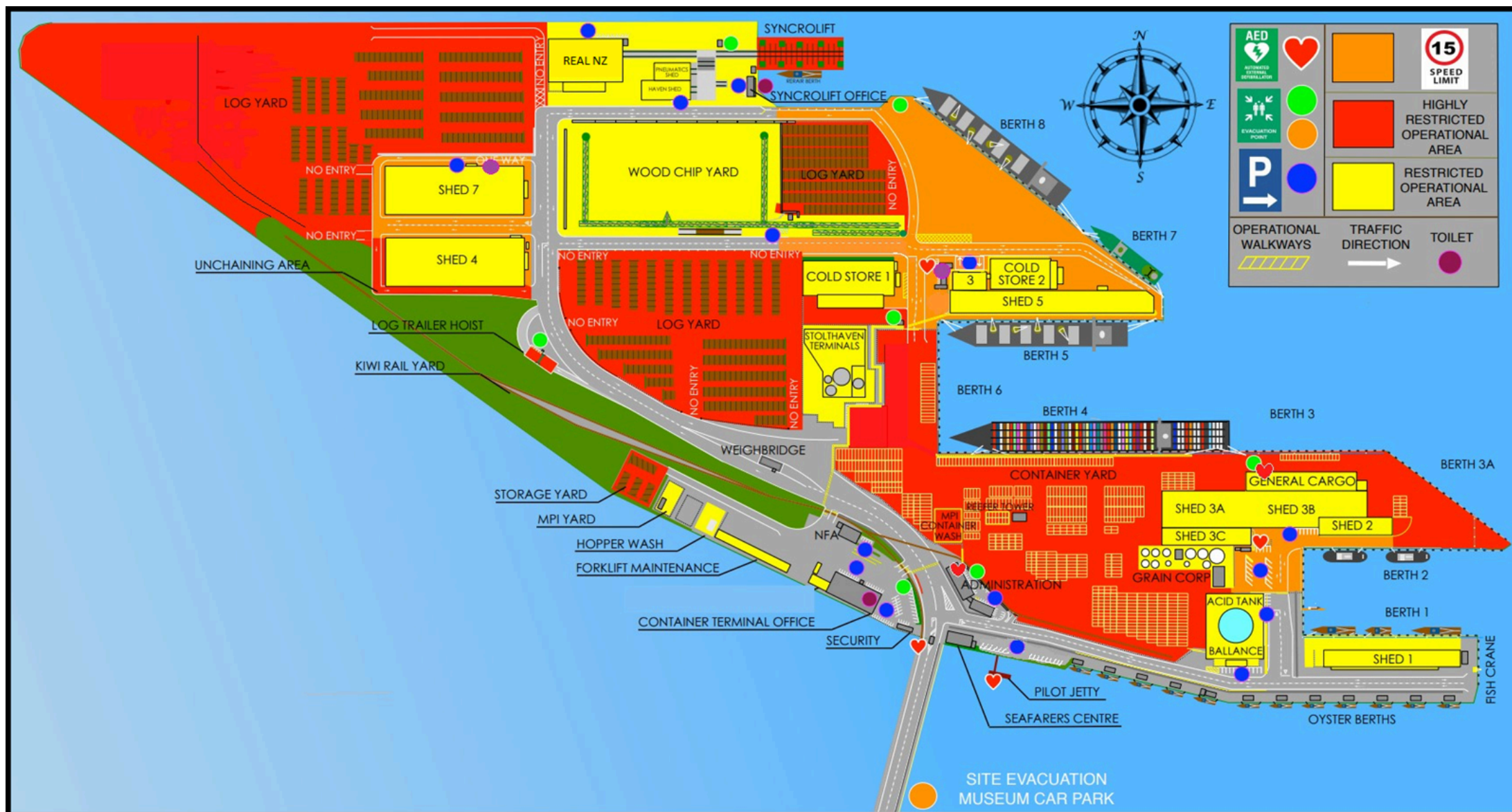


PERMITS

Any permit work completed on site must accompany the relevant documentation. Permitted work includes any work at heights, confined space, excavation, hot work, lifting/hiab and diving.



SAFETY + SECURITY GUIDE



IN THE EVENT OF A DEPARTMENT EMERGENCY:

- In the unlikely event of a department evacuation, the departmental alarm will sound
- Evacuate to the assembly area and follow the directions of the department Supervisor

DO NOT LEAVE THE ASSEMBLY POINT AREA until you are given the all-clear.

EMERGENCY PHONE NUMBERS

Police, Fire or Ambulance: 1-111
Port Security: 03 212 7828

IN THE EVENT OF A SITE EMERGENCY:

- In the unlikely event of a site evacuation, the site siren (air-raid) will sound
- Evacuate to the assembly area in the Maritime Museum carpark and follow all directions

DO NOT LEAVE THE ASSEMBLY AREA until you are given the all-clear.